



Cypress County - Policy
FIRE SERVICES LEVELS OF SERVICE

Policy Owner: Fire

Adoption Date:

Resolution: 2023/331

Policy: FP 12

Effective Date: October 7, 2014

Last Amended Date: September 19, 2023

FIRE SERVICES LEVEL OF SERVICE

PURPOSE

- a) To identify Emergency Services that the County is authorized to provide and to identify the level or standard to which each service will be performed.
- b) Cypress County Emergency Services strives to provide the best level of service possible to the residents of the County with dedicated Paid on Call Firefighters who are adequately trained and equipped to respond to emergencies within and outside of County boundaries. Response may be limited due to the availability of members either in a trained capacity or lack of availability within a fire station's district requiring that another fire station shall respond to guarantee a response to the incident. By identifying the need of Emergency Services and service levels in Appendix A, it is Council's role to balance the needs of the public, firefighter safety, protection of life, and property and environment with limited resources.
- c) Cypress County Fire Services is authorized to provide Emergency Services within the County's municipal boundaries as listed in Appendix A.
- d) Cypress County Fire Services is authorized to provide Emergency Services, as listed in Appendix A outside of the County's municipal boundaries and in accordance with approved mutual aid agreements.
- e) Levels of Service authorized by Cypress County for each of its Stations are detailed in Appendix A.
- f) Cypress County Emergency Services shall comply with standards that are applicable to Emergency Services and any and all legislative requirements.

DEFINITIONS

- a) **Certification:** Cypress County recognizes the following certifications:
 - i. International Fire Service Accreditation Congress (IFSAC)
 - ii. Pro Board
 - iii. Certification of Completion from a recognizable accredited organization.
- b) **Chief Administrative Officer:** The person appointed by Council to carry out the powers, duties and functions as defined and set out in the Alberta Municipal Government Act, RSA 2000, Chapter M-26.

- c) Control Zones: The areas at an incident that are designated based upon safety and the degree of hazard.
 - i. Cold Zone: The control zone of an incident that contains the command post and such other support functions that are deemed necessary to control the incident.
 - ii. Warm Zone: The control zone outside the hot zone where personnel and equipment decontamination and hot zone support takes place.
 - iii. Hot Zone: The control zone immediately surrounding a hazardous area, which extends far enough to prevent adverse effects to personnel outside the zone.
- d) Offensive Mode: Taking direct actions to mitigate the situation to achieve incident stabilization.
- e) Defensive Mode: Operations chosen to isolate or stabilize the incident from safer locations and to minimize or eliminate further damage. Actions are intended to control a fire by limiting its spread to a defined area, avoiding the commitment of personnel and equipment to dangerous areas.
- f) Duty Officer: The on-call officer that may act as Incident Commander, Incident Safety Officer or Resource Officer. The on-call Duty Officer may respond to incidents that warrant a higher level of experience or act as a resource aid to the officers responding from the called upon fire stations.
- g) Emergency Services Coordinator: The person responsible for supervising and overseeing Cypress County Emergency Services and is equivalent to that of the role of fire chief.
- h) Equivalent: Training that meets or exceeds the Standard or Level within this Policy.
- i) Fire Department: Cypress County Emergency Services.
- j) Fire Station: A building occupied By Cypress County to store apparatus, equipment for an emergency response to an assigned response area.
- k) Incident Command (IC): The individual responsible for all incident activities, including the development of strategies and tactics, the ordering, and the release of resources, and overseeing incident scene safety. The first responding fire station member or officer at an incident, who may transfer the responsibilities of Incident Command to a higher-ranking fire station officer, Station Chief, or to a Duty Officer.
- l) NFPA: National Fire Protection Association is responsible for creating standards that are applicable to emergency operations.
- m) OH & S – Occupational Health and Safety.
- n) Qualified Person: A person who, by possession of a recognized degree, certificate, professional standing, or skill, and who, by knowledge, training, and experience, has demonstrated the ability to deal with problems related to a particular subject matter, work, or project.
- o) Risk: A measure of the probability and severity of adverse effects that result from an exposure to a hazard.
- p) Risk Management: The process of planning, organizing, directing, and controlling the resources and activities of an organization in order to minimize detrimental effects on that organization.

- q) RIT: Rapid Intervention Team – A minimum of two fully equipped personnel on site, in a ready state, for immediate rescue of disoriented, injured, lost, or trapped rescue personnel.
- r) S-100G – Basic Grassland Wildfire Operations course obtained through the Office of the Fire Commissioner.
- s) Special Operation: Those emergency incidents to which the fire station responds that require specific and advanced training and specialized tools and equipment. (Example: Ice/Water Rescue, Rope Rescue, Grain Bin Rescue). In order to maintain certification, members shall meet the requirements from the training provider in terms of additional hours of training, recertification and proficiency training.
- t) Definitions of Standards Applicable to Cypress County Emergency Services

S-100G	Grassland Wildfire Operations or Equivalent
NFPA 472	Standard for Competence of Responding to Hazardous Materials/Weapons of Mass Destruction Incidents
NFPA 1001	Standard for Fire Fighter Professional Qualifications
NFPA 1002	Standard for Fire Apparatus Driver/Operator Professional Qualifications
NFPA 1006	Standard for Technical Rescue Personnel Professional Qualifications
NFPA 1021	Standard for Fire Officer Professional Qualifications
NFPA 1041	Standard for Fire and Emergency Services Instructor Professional Qualifications
NFPA 1051	Standard for Wildland Fire Fighting Personal Professional Qualifications
NFPA 1500	Standard on Fire Department Occupational Safety, Health, and Wellness Program
NFPA 1521	Standard for Fire Department Safety Officer Professional Qualifications
NFPA 1670	Standard on Operations a Training for Technical Search and Rescue Incidents
NFPA 1720	Standard for the Organization and Deployment of Fire Suppression Operations, Emergency Medical Operations, and Special Operations to the Public by Volunteer Fire Departments.
NFPA 1971	Standard on Protective Ensembles for Structural Fire Fighting and Proximity Fire Fighting
NFPA 1977	Standard on Protective Clothing and Equipment for Wildland Fire Fighting
NFPA 1981	Standard on Open-Circuit Self-Contained Breathing Apparatus (SCBA) for Emergency Services
NFPA 1982	Standard on Personal Alert Safety Systems (PASS)
MFR	First Aid/CPR Level C /Medical First Response

REFERENCE DOCUMENTS

- a) This Policy shall comply with Alberta Occupational Health and Safety Code and “A Code of Practice for Firefighters”.
- b) This Policy is subject to Cypress County’s Fire Service Bylaw and its amendments from time to time, and any specific provisions of the Municipal Government Act, NFPA 1500 (Standard on Fire Department Occupations Safety and Health Program), NFPA 1720 (Standard for the Organization and Deployment of Fire Suppression Operations, Emergency Medical Operations and Special Operations to the Public by Volunteer Fire Departments) and/or any other relevant legislation.

ORGANIZATION

- a) Cypress County Emergency Services consists of eight Fire Stations:
 - i. Box Springs
 - ii. Hilda
 - iii. Irvine
 - iv. Schuler
 - v. Seven Persons
 - vi. Walsh
 - vii. Dunmore
 - viii. Elkwater

- b) There are four areas within the County that are under contractual agreements providing fire suppression and rescue services from other jurisdictions:
 - i. County of 40 Mile, Bow Island
 - ii. CFB Suffield Fire Department
 - iii. Medicine Hat Fire Department – 8km dual response area with Dunmore Station
 - iv. Special Areas 2, Jenner

- c) Cypress County Emergency Services Organizational Structure is listed in Appendix B.

EQUIPMENT

- a) All Cypress County Fire Department members and apparatus shall be equipped with Personal Protective Equipment and equipment to match the assigned level of service.

TRAINING

- a) Cypress County is committed to the training of its fire fighters to the appropriate standards. Specific training to meet that standard may be delivered in house or through a contract from an outside training institution.
- b) Cypress County Emergency Services encourages all firefighters to hold NFPA 1001 Level 1 & 2 Certification, or a basic minimum of the following six qualifications or equivalents to demonstrate competency:
 - i. Basic Fireground Operations
 - ii. Fireground Water Supplies
 - iii. S100G Grassland Wildfire Operations
 - iv. Vehicle Extrication”
 - v. Dangerous Goods, Responder – Awareness Level
 - vi. Standard First Aid
- c) Within one year of joining a Fire Station, each member shall (subject to the availability of training courses) successfully complete “Basic Fireground Operations” or start the NFPA 1001 Level 1 & 2 Program. The Cypress County Emergency Services Coordinator may waive this requirement provided a member has achieved an acceptable level of certification by another means.
- d) In order to provide an enhanced level of service, County fire fighters are encouraged to take additional training as it becomes available.
- e) Each member shall attend training events as required in Policy FP 01 Volunteer Fire Departments for in-house skills retention training.
- f) On an biannual basis, a Fire Station Chiefs’ meeting will be held to discuss upcoming changes, training, concerns, and any other applicable fire related matters. Additional Fire Station Chiefs’ meetings may be held throughout the year upon request, or as needed, or at the discretion of the Emergency Services Coordinator.

STANDARD OPERATING GUIDELINES (SOG)

- a) The County is required under Alberta’s OH&S “A Code of Practice for Fire Fighters” to publish Standard Operating Guidelines that incorporate industry “best practices” to establish a standard course of action for emergency incidents to which a fire fighter is required to respond. These guidelines will be housed at each fire station and at the Fire Department headquarters in Dunmore.

- b) Standard Operating Guidelines shall be developed and implemented to assist the members with direction for procedures during any emergency incident. These SOG's will include Offensive/Defensive Operational modes, Control Zones, Tactics, Risk Management and required information pertaining to Operations.
- c) Standard Operating Guidelines shall be developed and implemented and set to the required training as outlined in the Fire Station's assigned Level of Service.
- d) Standard Operating Guidelines shall be reviewed regularly for necessary updates and/or appropriate amendments and are to be submitted to the Chief Administrative Officer for approval and then distributed to the Fire Members for their review and implementation.

RISK MANAGEMENT

- a) Risk management shall be implemented based on the following principles:
 - i. Where the risk to responding fire department members exceeds their training levels or the hazard assessment identifies there is risk to the member(s), activities shall be limited to defensive operations.
 - ii. Activities that are deployed to protect property shall be recognized as inherent risks to the safety of fire fighters and actions shall be taken to reduce or avoid risks.
 - iii. No risk to the safety of fire fighters shall be acceptable when there is no possibility to save lives or property.

RISK ASSESSMENT (See Appendix C for Risk Matrix)

- a) All feasible measures shall be taken to limit or avoid risk through a risk assessment.
- a) It is the responsibility of the Incident Commander to evaluate the level of risk in every situation.
- b) Risk assessment is a continuous process for the entire duration of each incident.
- c) If conditions change and risk increases, then it will be necessary for the incident commander to change strategies and tactics in accordance with risk assessment.
- d) No building or property is worth the life of a fire fighter.
- e) The incident commander shall evaluate the risk to members with respect to the purpose and potential results of their actions in each situation.
- f) In situations where the risk to fire station members exceeds their training levels or the hazard assessment identifies risk, activities shall be limited to defensive operations.

RESPONSIBILITIES

- a) Cypress County Emergency Services Coordinator or Deputy Fire Chief will ensure that:
 - i. the level of service identified is adhered to and that employees providing services are competent, and that all fire fighters work under an Incident Command System (ICS) during all emergency incidents; and
 - ii. Standard Operating Guidelines for Cypress County Emergency Services are published and provided to all fire members.

- b) Station Chief, Deputy Station Chiefs, Captains or first on scene fire fighters shall ensure attending members meet the appropriate level or standard when deploying operational tactics to address the incidents needs. Services carried out by fire members responding to an incident shall be in accordance with this Policy.

- c) Cypress County shall provide Emergency Services members with vaccination for Hepatitis A & B. (Emergency Services members maybe be exposed to blood borne pathogens during incidents).

- d) Fire members attending Medical First Response calls are required to be fully vaccinated for COVID-19 to comply with Alberta Health Services and Provincial health requirements.

APPENDIX A

Box Springs Fire Station

EMERGENCY SERVICES PROVIDED	STANDARD & LEVEL
Emergency Dispatch Services	Approved 911 Dispatch Center
Incident Command System	ICS – 100 at minimum
Incident Command	NFPA 1001 Level 2/NFPA 1021 Level 1 or Equivalent
Safety Officer	NFPA 1521
Fire Service Instructor	NFPA 1041 Level 1
Fire Service Instructor/Evaluator	NFPA 1041 Level 2
Fire Fighting Services	
• Structural – Interior	NFPA 1001 Level 2 or Equivalent
• Structural – Exterior	NFPA 1001 Level 1 or Equivalent
• Wildland Fire Fighting	S100G or NFPA 1051
• Vehicle Fire	NFPA 1001 Level 1 or Equivalent
Emergency Medical Services	
• Medical First Response (MFR)	MFR Program or Equivalent
• Rescue Services	
• Motor Vehicle Accidents (MVC)	NFPA 1001 Level 2 or Equivalent
• Livestock Transportation Incidents	Livestock Emergency Response Course
• Water/Ice Rescue	Compliant to NFPA 1670 and NFPA 1006 or Equivalent
• Technical Rescue	NFPA 1670 and NFPA 1006 or Equivalent
• Search & Rescue	Approved Search and Rescue Association of Alberta Courses
• Hazardous Materials	NFPA 472 Awareness
• Farm & Machinery	NFPA 1670 and NFPA 1006 or Equivalent
• Grain Bin Rescue	Grain Rescue Training accordance with Canadian Agricultural Safety Association
• Helicopter Landing Zone	Landing Zone Training
• Public Education	Cypress County Fire Department Programs
Other Services	
• Public Services (Fire Permits, Alarms, Unknown Odors) Mutual Aid Response as per Agreements	

- Fire Stations with members that do not meet the above standard, level or equivalent will be limited to Defensive Operations only.
- Members that do not have valid First/CPR Level C or equivalent shall not attend emergency incident until training has been completed.
- Fire Station shall have a **minimum of 6 members** that meet the above standard, level or equivalent to engage into Offensive Operations for Structure Fires.

Dunmore Fire Station

EMERGENCY SERVICES PROVIDED	STANDARD & LEVEL
Emergency Dispatch Services	Approved 911 Dispatch Center
Incident Command System	ICS – 100 at minimum
Incident Command	NFPA 1001 Level 2/NFPA 1021 Level 1 or Equivalent
Safety Officer	NFPA 1521
Fire Service Instructor	NFPA 1041 Level 1
Fire Service Instructor/Evaluator	NFPA 1041 Level 2
Fire Fighting Services	
• Structural – Interior	NFPA 1001 Level 2 or Equivalent
• Structural – Exterior	NFPA 1001 Level 1 or Equivalent
• Wildland Fire Fighting	S100G or NFPA 1051
• Vehicle Fire	NFPA 1001 Level 1 or Equivalent
Emergency Medical Services	
• Medical First Response (MFR)	MFR Program or Equivalent
Rescue Services	
• Motor Vehicle Accidents (MVC)	NFPA 1001 Level 2 or Equivalent
• Livestock Transportation Incidents	Livestock Emergency Response Course
• Water/Ice Rescue	Compliant to NFPA 1670 and NFPA 1006 or Equivalent
• Technical Rescue	NFPA 1670 and NFPA 1006 or Equivalent
• Search & Rescue	Approved Search and Rescue Association of Alberta Courses
• Hazardous Materials	NFPA 472 Awareness
• Farm & Machinery	NFPA 1670 and NFPA 1006 or Equivalent
• Grain Bin Rescue	Grain Rescue Training accordance with Canadian Agricultural Safety Association
• Helicopter Landing Zone	Landing Zone Training
• Public Education	Cypress County Fire Department Programs
Other Services	
• Public Services (Fire Permits, Alarms, Unknown Odors) Mutual Aid Response as per Agreements	

- Fire Stations with members that do not meet the above standard, level or equivalent will be limited to Defensive Operations only.
- Members that do not have valid First/CPR Level C or equivalent shall not attend emergency incident until training has been completed.
- Fire Station shall have a **minimum of 6 members** that meet the above standard, level or equivalent to engage into Offensive Operations for Structure Fires.

Elkwater Fire Station

EMERGENCY SERVICES PROVIDED	STANDARD & LEVEL
Emergency Dispatch Services	Approved 911 Dispatch Center
Incident Command System	ICS – 100 at minimum
Incident Command	NFPA 1001 Level 2/NFPA 1021 Level 2 or Equivalent
Safety Officer	NFPA 1521
Fire Service Instructor	NFPA 1041 Level 1
Fire Service Instructor/Evaluator	NFPA 1041 Level 2
Fire Fighting Services	
<ul style="list-style-type: none"> • Structural – Interior 	NFPA 1001 Level 2 or Equivalent
<ul style="list-style-type: none"> • Structural – Exterior 	NFPA 1001 Level 1 or Equivalent
<ul style="list-style-type: none"> • Wildland Fire Fighting 	S100G or NFPA 1051
<ul style="list-style-type: none"> • Vehicle Fire 	NFPA 1001 Level 1 or Equivalent
Emergency Medical Services	
<ul style="list-style-type: none"> • Medical First Response (MFR) 	MFR Program or Equivalent
Rescue Services	
<ul style="list-style-type: none"> • Motor Vehicle Accidents (MVC) 	NFPA 1001 Level 2 or Equivalent
<ul style="list-style-type: none"> • Livestock Transportation Incidents 	Livestock Emergency Response Course
<ul style="list-style-type: none"> • Water/Ice Rescue 	Compliant to NFPA 1670 and NFPA 1006 or Equivalent
<ul style="list-style-type: none"> • Technical Rescue 	NFPA 1670 and NFPA 1006 or Equivalent
<ul style="list-style-type: none"> • Search & Rescue 	Approved Search and Rescue Association of Alberta Courses
<ul style="list-style-type: none"> • Hazardous Materials 	NFPA 472 Awareness
<ul style="list-style-type: none"> • Farm & Machinery 	NFPA 1670 and NFPA 1006 or Equivalent
<ul style="list-style-type: none"> • Grain Bin Rescue 	Grain Rescue Training accordance with Canadian Agricultural Safety Association
<ul style="list-style-type: none"> • Helicopter Landing Zone 	Landing Zone Training
<ul style="list-style-type: none"> • Public Education 	Cypress County Fire Department Programs
Other Services	
<ul style="list-style-type: none"> • Public Services (Fire Permits, Alarms, Unknown Odors) Mutual Aid Response as per Agreements 	

- Fire Stations with members that do not meet the above standard, level or equivalent will be limited to Defensive Operations only.
- Members that do not have valid First/CPR Level C or equivalent shall not attend emergency incidents until training has been completed.
- Fire Station shall have a **minimum of 6 members** that meet the above standard, level or equivalent to engage into Offensive Operations for Structure Fires.

Hilda Fire Station

EMERGENCY SERVICES PROVIDED	STANDARD & LEVEL
Emergency Dispatch Services	Approved 911 Dispatch Center
Incident Command System	ICS – 100 at minimum
Incident Command	NFPA 1001 Level 2/NFPA 1021 Level 1 or Equivalent
Fire Fighting Services	
• Structural – Exterior	NFPA 1001 Level 1 or Equivalent
• Wildland Fire Fighting	S100G or NFPA 1051
• Vehicle Fire	NFPA 1001 Level 1 or Equivalent
Rescue Services	
• Motor Vehicle Accidents (MVC)	NFPA 1001 Level 2 or Equivalent
• Livestock Transportation Incidents	Livestock Emergency Response Course
• Hazardous Materials	NFPA 472 Awareness
• Farm & Machinery	NFPA 1670 and NFPA 1006 or Equivalent
• Helicopter Landing Zone	Landing Zone Training
• Public Education	Cypress County Fire Department Programs
Other Services	
• Public Services (Fire Permits, Alarms, Unknown Odors) Mutual Aid Response as per Agreements	

- Fire Stations with members that do not meet the above standard, level or equivalent will be limited to Defensive Operations only.
- Members that do not have valid First/CPR Level C or equivalent shall not attend emergency incidents until training has been completed.

Irvine Fire Station

EMERGENCY SERVICES PROVIDED	STANDARD & LEVEL
Emergency Dispatch Services	Approved 911 Dispatch Center
Incident Command System	ICS – 100 at minimum
Incident Command	NFPA 1001 Level 2/NFPA 1021 Level 1 or Equivalent
Safety Officer	NFPA 1521
Fire Service Instructor	NFPA 1041 Level 1
Fire Service Instructor/Evaluator	NFPA 1041 Level 2
Fire Fighting Services	
• Structural – Interior	NFPA 1001 Level 2 or Equivalent
• Structural – Exterior	NFPA 1001 Level 1 or Equivalent
• Wildland Fire Fighting	S100G or NFPA 1051
• Vehicle Fire	NFPA 1001 Level 1 or Equivalent
Emergency Medical Services	
• Medical First Response (MFR)	MFR Program or Equivalent
Rescue Services	
• Motor Vehicle Accidents (MVC)	NFPA 1001 Level 2 or Equivalent
• Livestock Transportation Incidents	Livestock Emergency Response Course
• Water/Ice Rescue	Compliant to NFPA 1670 and NFPA 1006 or Equivalent
• Technical Rescue	NFPA 1670 and NFPA 1006 or Equivalent
• Search & Rescue	Approved Search and Rescue Association of Alberta Courses
• Hazardous Materials	NFPA 472 Awareness
• Farm & Machinery	NFPA 1670 and NFPA 1006 or Equivalent
• Grain Bin Rescue	Grain Rescue Training accordance with Canadian Agricultural Safety Association
• Helicopter Landing Zone	Landing Zone Training
• Public Education	Cypress County Fire Department Programs
Other Services	
• Public Services (Fire Permits, Alarms, Unknown Odors) Mutual Aid Response as per Agreements	

- Fire Stations with members that do not meet the above standard, level or equivalent will be limited to Defensive Operations only.
- Members that do not have valid First/CPR Level C or equivalent shall not attend emergency incidents until training has been completed.
- Fire Station shall have a **minimum of 6** members that meet the above standard, level or equivalent to engage into Offensive Operations for Structure Fires.

Seven Persons Fire Station

EMERGENCY SERVICES PROVIDED	STANDARD & LEVEL
Emergency Dispatch Services	Approved 911 Dispatch Center
Incident Command System	ICS – 100 at minimum
Incident Command	NFPA 1001 Level 2/NFPA 1021 Level 1 or Equivalent
Safety Officer	NFPA 1521
Fire Service Instructor	NFPA 1041 Level 1
Fire Service Instructor/Evaluator	NFPA 1041 Level 2
Fire Fighting Services	
Structural – Interior	NFPA 1001 Level 2 or Equivalent
Structural – Exterior	NFPA 1001 Level 1 or Equivalent
Wildland Fire Fighting	S100G or NFPA 1051
Vehicle Fire	NFPA 1001 Level 1 or Equivalent
Emergency Medical Services	
Medical First Response (MFR)	MFR Program or Equivalent
Rescue Services	
Motor Vehicle Accidents (MVC)	NFPA 1001 Level 2 or Equivalent
Livestock Transportation Incidents	Livestock Emergency Response Course
Water/Ice Rescue	Compliant to NFPA 1670 and NFPA 1006 or Equivalent
Technical Rescue	NFPA 1670 and NFPA 1006 or Equivalent
Search & Rescue	Approved Search and Rescue Association of Alberta Courses
Hazardous Materials	NFPA 472 Awareness
Farm & Machinery	NFPA 1670 and NFPA 1006 or Equivalent
Grain Bin Rescue	Grain Rescue Training accordance with Canadian Agricultural Safety Association
Helicopter Landing Zone	Landing Zone Training
Public Education	Cypress County Fire Department Programs
Other Services	
Public Services (Fire Permits, Alarms, Unknown Odors) Mutual Aid Response as per Agreements	

- Fire Stations with members that do not meet the above standard, level or equivalent will be limited to Defensive Operations only.
- Members that do not have valid First/CPR Level C or equivalent shall not attend emergency incidents until training has been completed.
- Fire Station shall have a **minimum of 6 members** that meet the above standard, level or equivalent to engage into Offensive Operations for Structure Fires.

Schuler Fire Station

EMERGENCY SERVICES PROVIDED	STANDARD & LEVEL
Emergency Dispatch Services	Approved 911 Dispatch Center
Incident Command System	ICS – 100 at minimum
Incident Command	NFPA 1001 Level 2/NFPA 1021 Level 1 or Equivalent
Fire Fighting Services	
Structural – Interior	NFPA 1001 Level 2 or Equivalent
Structural – Exterior	NFPA 1001 Level 1 or Equivalent
Wildland Fire Fighting	S100G or NFPA 1051
Vehicle Fire	NFPA 1001 Level 1 or Equivalent
Emergency Medical Services	
Medical First Response (MFR)	MFR Program or Equivalent
Rescue Services	
Motor Vehicle Accidents (MVC)	NFPA 1001 Level 2 or Equivalent
Livestock Transportation Incidents	Livestock Emergency Response Course
Technical Rescue	NFPA 1670 and NFPA 1006 or Equivalent
Search & Rescue	Approved Search and Rescue Association of Alberta Courses
Farm & Machinery	NFPA 1670 and NFPA 1006 or Equivalent
Grain Bin Rescue	Grain Rescue Training accordance with Canadian Agricultural Safety Association
Helicopter Landing Zone	Landing Zone Training
Public Education	Cypress County Fire Department Programs
Other Services	
Public Services (Fire Permits, Alarms, Unknown Odors) Mutual Aid Response as per Agreements	

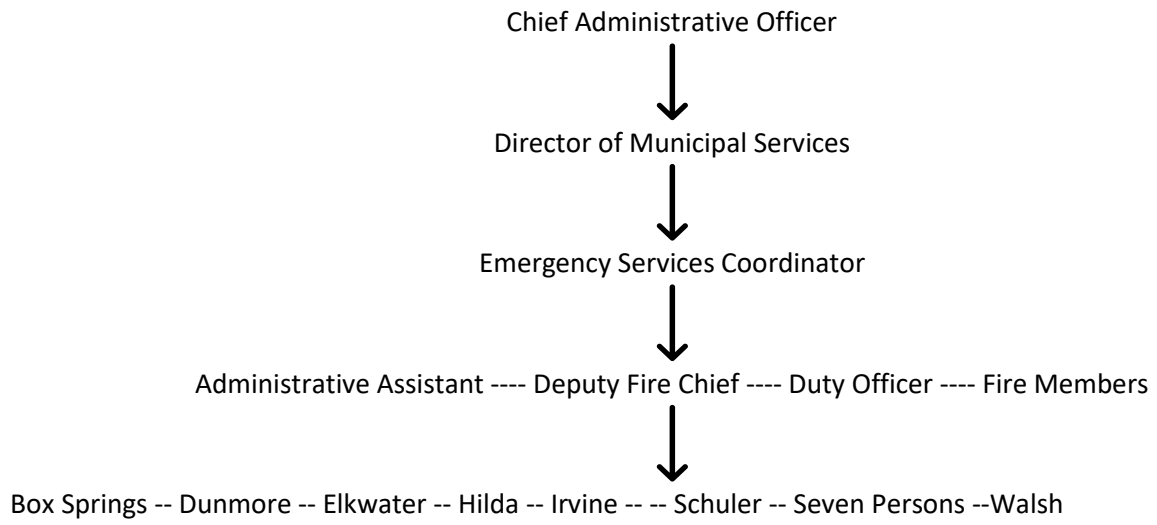
- Fire Stations with members that do not meet the above standard, level or equivalent will be limited to Defensive Operations only.
- Members that do not have valid First/CPR Level C or equivalent shall not attend emergency incidents until training has been completed.
- Fire Station shall have a **minimum of 6 members** that meet the above standard, level or equivalent to engage into Offensive Operations for Structure Fires.

Walsh Fire Station

EMERGENCY SERVICES PROVIDED	STANDARD & LEVEL
Emergency Dispatch Services	Approved 911 Dispatch Center
Incident Command System	ICS – 100 at minimum
Incident Command	NFPA 1001 Level 2/NFPA 1021 Level 1 or Equivalent
Fire Fighting Services	
Structural – Exterior	NFPA 1001 Level 1 or Equivalent
Wildland Fire Fighting	S100G or NFPA 1051
Vehicle Fire	NFPA 1001 Level 1 or Equivalent
Emergency Medical Services	
Medical First Response (MFR)	MFR Program or Equivalent
Rescue Services	
Motor Vehicle Accidents (MVC)	NFPA 1001 Level 2 or Equivalent
Livestock Transportation Incidents	Livestock Emergency Response Course
Hazardous Materials	NFPA 472 Awareness
Farm & Machinery	NFPA 1670 and NFPA 1006 or Equivalent
Grain Bin Rescue	Grain Rescue Training accordance with Canadian Agricultural Safety Association
Helicopter Landing Zone	Landing Zone Training
Public Education	Cypress County Fire Department Programs
Other Services	
Public Services (Fire Permits, Alarms, Unknown Odors) Mutual Aid Response as per Agreements	

- Fire Stations with members that do not meet the above standard, level or equivalent will be limited to Defensive Operations only.
- Members that do not have valid First/CPR Level C or equivalent shall not attend emergency incidents until training has been completed.

APPENDIX B



APPENDIX C

	Severity			
Probability	Negligible	Marginal	Critical	Catastrophic
Very Low				
Low				
Medium				
High				

	Low Risk
	Medium Risk
	Extreme Risk

Definitions:

Negligible risk - little consequence as to warrant little or no attention

Marginal risk - Medium risk that requires attention

Critical risk - High risk that requires attention

Catastrophic risk - Extreme risk that requires amideate attention

Policy History

Amendment Dates & Descriptions:

Resolution: 2019/113, March 26, 2019
 Resolution: 2022/037, February 1, 2022

Review Dates & Outcomes: